

74 Fore Street, Edmonton, N18 2FF
Offers In Excess Of £250,000

Castles

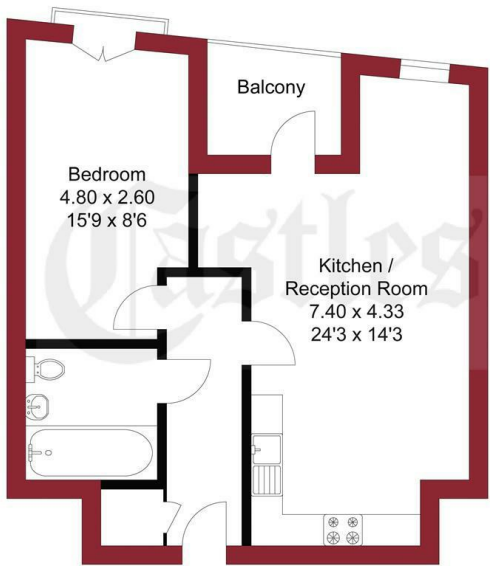


Castles are delighted to offer this one bedroom flat located within a modern development on the borders of Tottenham and within walking distance of Silver Street and White Hart Lane Train Stations. The property is situated within walking distance of Meridian Water Development and local amenities. The property benefits from open plan kitchen/lounge, private balcony, bathroom, long lease, video entry phone, offered chain free with lift and stairs to the 7th floor, making it an ideal investment or first time buyer purchase. Internal viewing is highly recommended.



438 Hertford Road
Edmonton
London
N9 8AB
020 8804 8123
edmonton@castles.london
www.propertysoftwaregroup.com

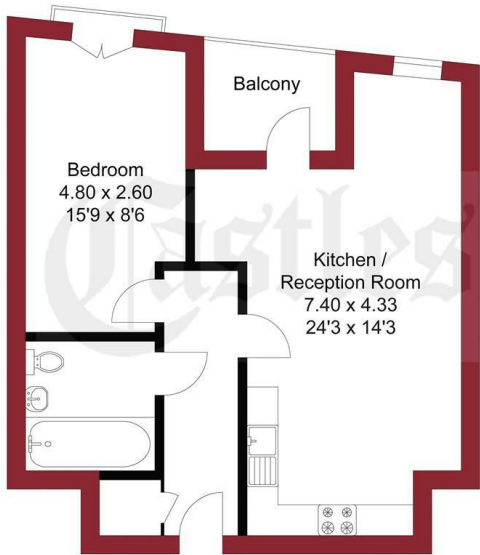
APPROXIMATE GROSS INTERNAL AREA
47.93 sqm / 515.91 sqft



7TH FLOOR

THIS PLAN IS FOR ILLUSTRATION ONLY AND MAY NOT BE REPRESENTATIVE OF THE PROPERTY

APPROXIMATE GROSS INTERNAL AREA
47.93 sqm / 515.91 sqft



7TH FLOOR

THIS PLAN IS FOR ILLUSTRATION ONLY AND MAY NOT BE REPRESENTATIVE OF THE PROPERTY

Energy Efficiency Rating			Environmental Impact (CO ₂) Rating		
	Current	Potential		Current	Potential
Very energy efficient - lower running costs			Very environmentally friendly - lower CO ₂ emissions		
(92 plus) A			(92 plus) A		
(81-91) B			(81-91) B		
(69-80) C			(69-80) C		
(55-68) D			(55-68) D		
(49-54) E			(49-54) E		
(41-48) F			(41-48) F		
(35-40) G			(35-40) G		
Not energy efficient - higher running costs			Not environmentally friendly - higher CO ₂ emissions		
England & Wales	EU Directive 2002/91/EC		England & Wales	EU Directive 2002/91/EC	